



Sociedad Española de Mineralogía

www.ehu.es/sem

2016 SEM GRANTS AND ACTIVITIES PROGRAM



The Spanish Mineralogical Society (SEM) has a long tradition of supporting initiatives that promote knowledge in the fields of mineralogy, petrology, geochemistry and related sciences, as well as for training teachers and researchers in these disciplines. In order to

normalize the financial aid policy, adjust the financial aid to the economic availability and extend the performance of the SEM to as many potential members as possible, the last council meeting on 5 February 2016 approved the 2016 SEM Grants and Activities Program. This program will be used for planning the future of SEM in regards to three core topics: first, international collaboration among academics, industry and government; second, promote the presence of our members in journals and events, especially the *European Journal of Mineralogy (EJM)* and *Elements*; third, define the needs of young mineralogists. SEM's efforts will focus on five programs of activities:

1. Knowledge dissemination program
 - 1.1 Grants for workshops and expositions
2. Training program for young researchers
 - 2.1 Grants for organizing doctorate workshops
 - 2.2 Meeting attendance grants for young researchers
3. Internationalization program
 - 3.1 Organization of scientific sessions at international meetings
4. Promoting program for SEM publications
5. Award program
 - 5.1 Master's thesis awards
 - 5.2 Young researcher awards for the best communications at SEM meetings

For more information on these programs or applying for grants, you are encouraged to visit our webpage at forms.sociedadmineralogia.es/home.

The SEM council warmly invites all SEM members to participate in these programs.

Juan Jiménez, SEM President

ANNUAL SEM MEETING 2016

The annual meeting of the Spanish Mineralogical Society will be held in conjunction with the 2nd European Mineralogical Conference (emc2016) in Rimini (Italy) during the second week of September 2016.

The annual member meeting is scheduled for the evening of Tuesday, 13 September 2016. The Master's Thesis and SEM Enciende awards will be announced during the annual meeting.

In addition, Professor Emilio Galán, emeritus Professor of Earth Sciences at the University of Sevilla (Spain) will receive the award of Honorary Fellow by the Spanish Mineralogical Society for his long and highly productive career. We will be able to enjoy hearing him speak during his plenary presentation at emc2016.



Emilio Galán

For updated information, go to <http://emc2016.socminpet.it>



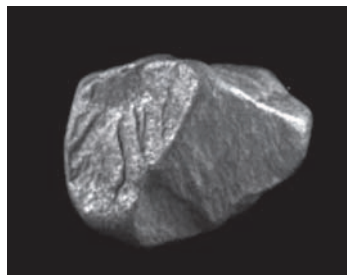
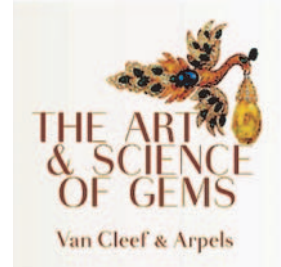
Société Française de Minéralogie et de Cristallographie

www.sfmc-fr.org

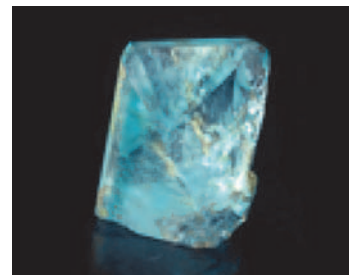
EXHIBITION ANNOUNCEMENT

Van Cleef & Arpels, the High Jewelry Maison established in Paris (France) are working with the French National Museum of Natural History (NMNH) on an exhibition hosted by the ArtScience Museum in Singapore and titled, Van Cleef & Arpels: The Art and Science of Gems (23 April–14 August 2016). This exhibition explores both the artistic skills

required for the creation of exquisite jewelry and the Earth processes involved in the formation of minerals and gemstones. Blending art, craft, history and geoscience in a distinctive manner, visitors are taken on a journey through the origin of minerals, one that includes their formation in the deep Earth to when and how they reach the surface.

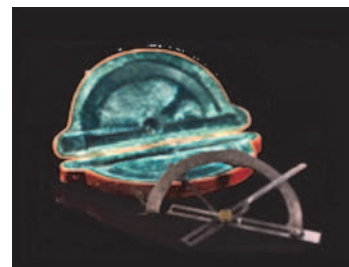


Black diamond (330 ct) from Bahia, Brazil (~1820)



Blue topaz (21,560 ct) Virgem da Lapa (Brazil)

Four hundred pieces of jewelry, selected from the Van Cleef & Arpels collection and those of private collectors, reflect the poetry, skill and expertise of this *Maison*. Alongside the jewelry collection are more than 250 important natural treasures from the MNHN mineral and gem collections. Professor François Farges (of the NMNH) has selected seven themes of importance for gem genesis: pressure, tempera-



Haüy's goniometer (Marie Putois, Paris, 1794)

ture, transport, water, oxygen, life and metamorphism. Among the pieces to be exhibited is a stunning 330 ct black diamond, one of the largest known in its original state; a 21,560 ct blue topaz; a 10,000+ ct ruby; and many more. Also on display are some of the gems and instruments that belonged to René-Just Haüy (1743–1822), founder of modern gemology at the MNHN in the 1800s. Some of the former French Crown Jewels will also be exhibited for the first time in Asia. Last but not least, Europe's largest quartz crystal (800 kg, found in 1754) and some of the "dreamstones" from Roger Caillois, the preeminent French poet of the 20th century.

For further information: <http://www.marinabaysands.com/museum/van-cleef-and-arpels.html>

FORTHCOMING WORKSHOP

4th **Serpentine** days
25-29 September
Sète, France
2016

