



www.dmg-home.de

# German Mineralogical Society



Jochen Schlüter

## THE ONLINE TYPE SPECIMEN CATALOGUE GERMANY

Type mineral specimens are the material used to obtain data for the original description of a new mineral species and are the only proof of the examinations. The definition of a type mineral specimen (ideally a holotype or cotype) is furthermore necessary to address doubts and questions that could arise from erroneous or incomplete original descriptions. Incompleteness can occur if the relevance of certain attributes of a new mineral were not known at the time of the original description or if scientific instruments necessary for the determination of certain attributes did not exist at the time.



Reinhardt Kurtz

In consequence – and for their historical value as a new discovery – such type mineral specimens are kept in permanent scientific depositories to guarantee their availability for scientific re-examinations and their professional curation at any time. Nowadays, the Commission on New Minerals, Nomenclature and Classification (CNMNC) of the IMA requires that the type material be deposited in a professionally curated museum when a new mineral species is accepted.

Currently the Mineralogical Museums and Collections Working Group of the German Mineralogical Society (DMG) is compiling a type specimen catalogue for type materials retained in Germany. The catalogue is available online at [www1.uni-hamburg.de/mpi/typkatalog/](http://www1.uni-hamburg.de/mpi/typkatalog/). With this catalogue, the working group – a network of the numerous mineralogical collections and museums in Germany – preserves the inventory of German type mineral specimens for the future and offers the

scientific community swift access to information and material. At this time, 201 of the expected 250 type specimens are compiled in the catalogue. The illustrated catalogue lists all type specimens currently present in German museums. The type minerals are described in detail. Entries offer information about the museums and scientists in charge of specimens and collection. Furthermore information about the nature of the type specimens and their associated minerals, references to their original descriptions and their history are given (FIG.1).

In addition *Type Specimen Catalogue Germany* offers a free-download geo reference file, which links the type localities of the type specimens as well as the locations of the relevant German museums with the free software GoogleEarth. If GoogleEarth is installed on the computer, double-clicking on the downloaded \*.kmz file will start GoogleEarth and present lists of type specimens, type localities,

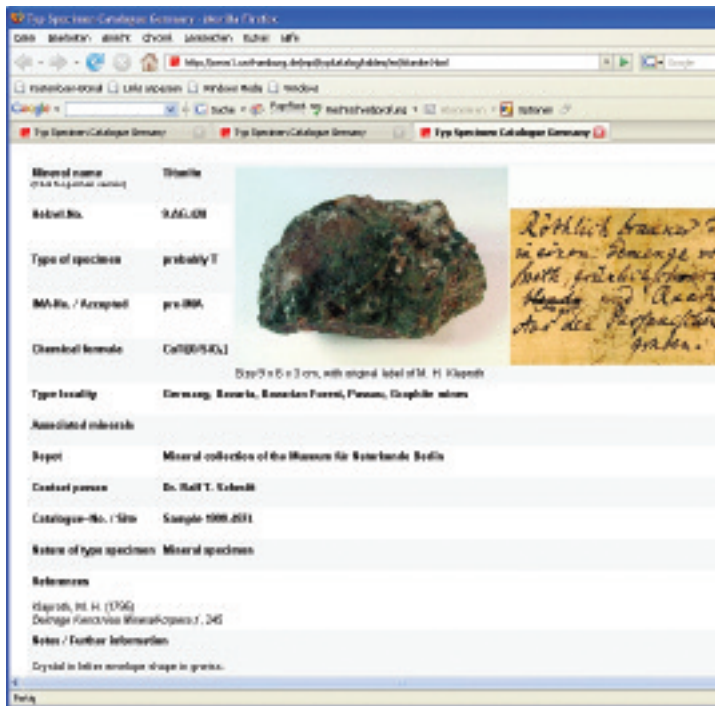


FIGURE 1

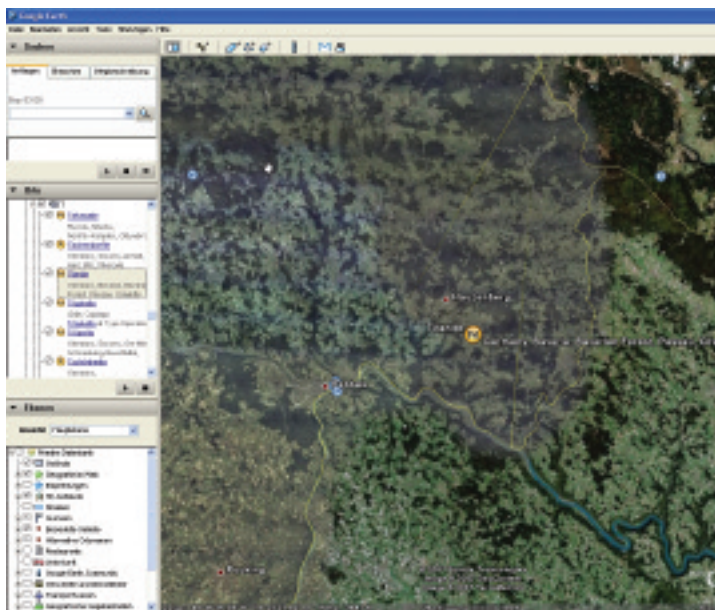


FIGURE 2

and museums. By clicking on entries in those lists, GoogleEarth will navigate to the chosen locality (FIG. 2). Clicking on a mineral name on the GoogleEarth maps will redirect you to the *Type Specimen Catalogue Germany*.

Information about the type localities of many older type specimens are sparse, so the geo reference data are classified into three categories of accuracy:

precise, near, and approximate. If you can help us with corrections or suggestions concerning the validity or accuracy of our coordinates of the type localities, don't hesitate to send an e-mail to [kurtz@mineralogie.uni-hamburg.de](mailto:kurtz@mineralogie.uni-hamburg.de), subject "Type Catalogue."

**Jochen Schlüter  
Reinhardt Kurtz**  
Hamburg, Germany