



The Clay Minerals Society

www.clays.org

THE PRESIDENT'S CORNER



This issue of *Elements* is one that I, as a member of The Clay Minerals Society, find to be particularly pleasurable reading. The "Bentonites" issue, sponsored by The Clay Minerals Society and guest-edited by our incoming president Derek Bain, describes aspects of a rock that has its origins in volcanic ash—a rock born directly of the Earth's most dynamic processes. The alteration of this glassy ash and formation of a smectite clay product

is a process which has been studied since the earliest days of clay mineralogy yet still provides new perspectives on Earth-forming processes. We hope you enjoy this issue, and that clay mineral study enriches your research path.

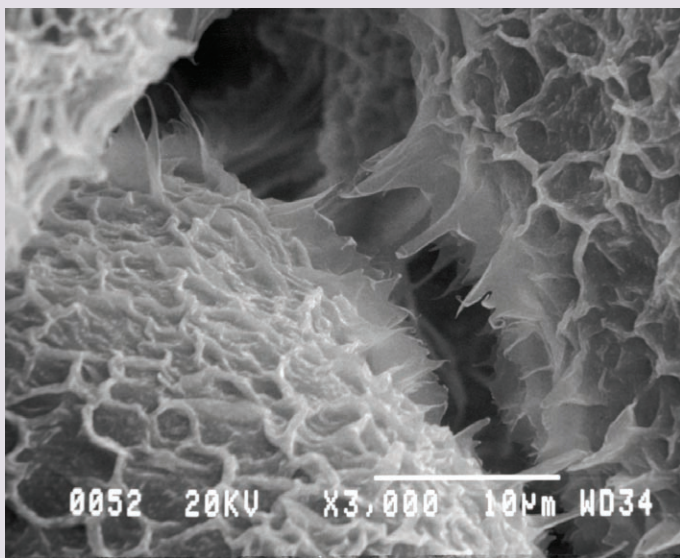
The Clay Minerals Society, chartered in 1963, is the largest clay mineral society in the world. Its diverse membership, which bridges industry, academia, and government, meets once a year. This year's meeting, in Billings, Montana, USA, has bentonites as its theme, one which dovetails with the content of this *Elements* issue. The meeting will be a great one, with a field trip to bentonite localities as well as a workshop entitled "Clays of Yellowstone National Park." We invite you to join us. Particulars regarding dates and content can be found at <https://cms.clays.org/meetings>. Enjoy!

Andrew Thomas

President, The Clay Minerals Society
Chevron Energy Technology Company, Houston, Texas, USA
andrew.thomas@chevron.com

"IMAGES OF CLAY" NEEDS YOUR IMAGES!

Check out the latest additions to "Images of Clay" and submit your own images for inclusion. This is a web-based archive of pictures of clays and clay minerals freely available to all to download for non-profit purposes, such as the teaching of clay mineralogy. It can be accessed via The Clay Minerals Society website, www.clays.org.



Which clay is it? Find out at "Images of Clay".
(www.minersoc.org/pages/gallery/claypix/index.html)

INTO THE FUTURE: A DATE FOR YOUR DIARY

The 2010 meeting of the CMS will be a joint trilateral meeting on clays with the Spanish Clay Society (SEA) and the Clay Science Society of Japan (CSSJ).

Conference activities and dates:

- Materials and Clay Minerals workshop (Madrid, 6 June 2010)
- Sepiolite Symposium and a field trip to the Tajo Basin deposits (Madrid, 7 June 2010)
- General meeting covering various topics on clays and clay minerals and a field trip to the Rio Tinto mine and Green Corridor (Seville, 8–11 June 2010)

More information will be available soon on the CMS website.

FEBRUARY 2009 ISSUE OF CLAYS AND CLAY MINERALS

JAVIER CARRILLO-ROSÚA, SALVADOR MORALES-RUANO, IÑAKI ESTEBAN-ARISPE, AND PURIFICACIÓN FENOLL HACH-ALÍ • Significance of phyllosilicate mineralogy and mineral chemistry in an epithermal environment. Insights from the Palai-Islica Au-Cu deposit (Almería, SE Spain)

PABLO PARDO, JOAQUÍN BASTIDA, FRANCISCO J. SERRANO, RAFAEL IBÁÑEZ, AND MAREK A. KOJDECKI • X-ray diffraction line-broadening study on two vibrating dry-milling procedures in kaolinites

MAGUY JABER, FABRICE O.M. GASLAIN, AND JOCELYNE MIEHÉ-BRENDLÉ • Rapid and direct synthesis of spherical organotalc

TORSTEN SEIFFARTH AND CHRISTIAN KAPS • Structural characterization of (Cu²⁺,Na⁺)- and (Cu²⁺,NH⁴⁺)-exchanged bentonites upon thermal treatment

E. CABELLO, M.P. MORALES, C.J. SERNA, V. BARRÓN, AND J. TORRENT • Magnetic enhancement during the crystallization of ferrihydrite at 25 and 50°C

EVA SCHOLTZOVÁ AND L'UBOMIR SMRČOK • Hydrogen bonding and vibrational spectra in kaolinite-dimethylsulfoxide and -dimethylselenoxide intercalates – a solid state computational study

STEPHAN KAUFHOLD, ANNETTE KAUFHOLD, REINHOLD JAHN, SALOMÓN BRITO, REINER DOHRMANN, RAINER

HOFFMANN, HARTMUT GLIEMANN, PETER WEIDLER, AND MANFRED FRECHEN • A new massive deposit of allophane raw material in Ecuador

S.V. PRASANNA, A.V. RADHA, P. VISHNU KAMATH, AND S. KANNAN • Bromide-ion distribution in the interlayer of the layered double hydroxides of Zn and Al: Observation of positional disorder

MAREK SZCZERBA AND JAN ŚRODOŃ • Extraction of diagenetic and detrital ages and of ⁴⁰K_{detrital}/⁴⁰K_{diagenetic} ratios from K–Ar dates of clay fractions

KATJA EMMERICH, FELICITAS WOLTERS, GUENTER KAHR, AND GERHARD LAGALY • Clay profiling: The classification of montmorillonites

FELICITAS WOLTERS, GERHARD LAGALY, GUENTER KAHR, ROLF NUYESCH, AND KATJA EMMERICH • A comprehensive characterization of dioctahedral smectites

STEPHEN GUGGENHEIM, JOHN M. ADAMS, FAIZA BERGAYA, MARIA F. BRIGATTI, VICTOR A. DRITS, MILTON L.L. FORMOSO, EMILIO GALÁN, TOSHIHIRO KOGURE, HELGE STANJEK, AND JOSEPH STUCKI • Nomenclature for stacking in phyllosilicates: Report of the Association Internationale pour l'Etude des Argiles (AIPEA) Nomenclature Committee for 2008

Access this content online at www.ingentaconnect.com/content/cms/ccm or at <http://gscm.highwire.org/>. Subscribers to *CCM* have free online access to the journal, at either site; visit www.clays.org/journal/JournalOnline1.html for information on how to do this.

Access to the *Clays and Clay Minerals* archive is available free of charge at www.clays.org/journal/archive/TOC/main.htm. This includes the full text of all material published in the journal from 1952 to 2001, inclusively.