

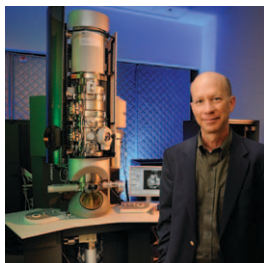


Mineralogical Society of America

www.minsocam.org

PRESIDENT'S LETTER

MSA and AGU: A Very Important Partnership Begins



Michael F. Hochella

We are exceptionally pleased to announce that Alex Speer and I, on behalf of the Mineralogical Society of America, have signed a Memorandum of Understanding (MOU) with the American Geophysical Union (AGU) and its president, Michael McPhaden, and executive director, Christine McEntee. AGU is the largest geophysical society in the world, with a membership well in excess of 50,000 from roughly 135 countries. Its fall meeting attendance is now in excess of 20,000 and has doubled in less than 10 years. This is

by far the largest annual meeting of geophysical scientists in the world and is arguably the most diverse gathering among all geoscience meetings.

How did this union come about, and what does it mean? Many of us have wanted to consummate a formal agreement between MSA and AGU for some time. The actual breakthrough for this MOU started last May when then MSA Past-President John Brady contacted former AGU President and MSA Fellow Tim Grove of MIT. Tim was very receptive to a formal agreement between the societies and put John in contact with Christine McEntee. David Bish was MSA president at that time, and he shepherded the connection along until I became MSA's president at the 2011 GSA meeting in Minneapolis. Over the last few months, we have had detailed discussions with several AGU section and focus group officers, which resulted in the creation and signing of our MOU.

The MOU acknowledges that joint activity between AGU and MSA fosters the further development of science and provides opportunities for the memberships of both societies. The agreement formally opens the door to cooperation involving scientific conferences, educational opportunities, student programs, and professional services. It specifically stipulates that each organization will offer members of the other organization registration at member rates at its annual meeting. For AGU, this would be the fall meeting in early December each year in San Francisco, and for MSA, it would be short courses that we sponsor. MSA and AGU leaders will meet each year to discuss issues of mutual interest and cooperation, and their business offices will now seek collaboration wherever needed or useful.

A specific opportunity that we are currently pursuing with the Volcanology, Geochemistry, and Petrology (VGP) Section and the Mineral and Rock Physics (MRP) Focus Group of AGU is to move MSA's Dana Medal presentation and lecture to the fall AGU meeting. We feel that the Dana Medal deserves a consistent home, much like the Roebing Medal and MSA Award have enjoyed for many decades at the GSA annual meeting. We are also looking for ways to hold joint MSA-AGU short courses and ways to bring *Elements* magazine to a wider audience. Sessions cosponsored by AGU and MSA, as well as joint social events, now become a distinct possibility at fall AGU meetings.

MSA has worked with AGU before. In fact, MSA cosponsored AGU's spring meeting, which was held in Baltimore for many years before moving around North America and Europe starting in 1998. I remember fondly: I was awarded the 2002 Dana Medal at a spring AGU meeting in Washington, DC. But those days are long gone. The spring meeting has morphed into the Joint Assembly, and in August 2012, that meeting combines AGU with the Asia Oceania Geosciences Society in Singapore.

Full membership in AGU is only \$20 per year. Personally, I am a long-time member and a fellow of that society, and, like many of you, I can attest to the fact that *EOS* alone is easily worth the cost of membership.

EOS has a weekly circulation in excess of 60,000 and is considered by many to be the premier international newsletter/newspaper for Earth scientists.

It is most important to emphasize that MSA's highly productive, long-term relationship with the GSA annual meeting will not change as a result of this AGU-MSA agreement. In fact, AGU and GSA have already enacted a highly cooperative MOU between them. GSA boasts a still-growing membership from around the world, and its members have shown remarkable loyalty and cohesiveness. Most MSA members know GSA very well, as the majority of GSA's 17 divisions have something to do with minerals. I am also proud to be a long-time member and a fellow of this great society.

As I have written before, mineralogy should not exist in a vacuum. We are the keepers of the core science that underlies nearly all areas of the Earth and planetary sciences. As such, it is a privilege that we can associate with and have formal ties to great societies like GSA and AGU. The opportunities that this provides us are nearly endless.

Michael F. Hochella (hochella@vt.edu)
MSA President

NOTES FROM CHANTILLY

- MSA will be using electronic balloting for the 2012 election of its officers and councilors. The slate of candidates for the 2012 MSA Council election is as follows – president: John M. Hughes; vice president: David J. Vaughan and Harry Y. McSween Jr.; treasurer: Edward S. Grew and Howard W. Day; councilors (two to be selected): Joshua M. Feinberg, Horst R. Marschall, Isabelle Daniel, and Kirsten P. Nicolaysen. Andrea Koziol continues in office as secretary. Continuing councilors are Pamela C. Burnley, Guy L. Hovis, Christine M. Clark, and Kimberly T. Tait.



VOTE

2012 MSA ELECTIONS

MSA members will be sent voting instructions by e-mail in April. Make sure MSA has your current e-mail address! Those who do not wish to vote online can request a paper ballot

from the MSA business office. As always, the voting deadline is August 1. Individuals elected to office decide on the direction of the Society. Voting is an important job for all MSA members.

- There is a new virtual special issue of the *American Mineralogist* on the theme "**Minerals in the Human Body**" (http://ammin.geoscienceworld.org/site/misc/asbestos_health.xhtml), which will examine the interaction, formation, and alteration of minerals in the human body. Manuscript submissions are welcome, and the special issue will remain open for submissions until at least the end of 2013. The associate editors of this special issue are Mickey Gunter (Department of Geological Sciences, University of Idaho) and Gregory Meeker (U.S. Geological Survey). They hope to demonstrate how mineralogists, petrologists, and geochemists can aid in this area, while including papers from other specialists outside the geosciences and involved with this theme (e.g. medical researchers and workers in the regulatory fields).
- MSA workshops have returned. There will be a joint Deutsche Mineralogische Gesellschaft (DMG) short course and Mineralogical Society of America workshop on the theme "Application of Diffusion Studies to the Determination of Timescales in Geochemistry and Petrology," on 1–5 October 2012 at the Institut für Geologie, Mineralogie und Geophysik, Ruhr Universität Bochum, Germany. Details are available at www.minsocam.org/MSA/SC/#diffusion.

- MSA's **Mineralogy4Kids** site has been extensively updated and expanded by Vicki Harder and Isaac Harder, and has its own URL: www.mineralogy4kids.org. It is worth exploring.

∴ Mineralogy 4 Kids ∴

Rockin Internet Site

- Two newly published European Mineralogical Union (EMU) Notes volumes are available through MSA: volume 9, *Advances in the Characterization of Industrial Minerals*, and volume 11, *Layered Mineral Structures and Their Application in Advanced Technologies*. MSA also has several titles of the *Lithographie* monographs. Descriptions, tables of contents, and instructions for ordering these and other volumes can be accessed from the MSA home page, www.minsocam.org.

J. Alex Speer, MSA Executive Director
(jaspeer@minsocam.org)

INVITATION TO REQUEST A 2012–2013 MSA DISTINGUISHED LECTURER

The Mineralogical Society is again offering a Distinguished Lecturer program for the 2012–2013 academic year, with the arrangement that the MSA will pay travel expenses of the lecturers and the host institution will be responsible for local expenses, including accommodation and meals. The program will include three lecturers, one of whom resides in Europe. Depending on the response, one or more lecture tours will be arranged outside North America.

The 2012–2013 Distinguished Lecturers are **Julia Baldwin**, **Matt Kohn**, and **Hans-Peter Schertl**, and their affiliations and lecture titles are as follow:

Julia A. Baldwin

Department of Geosciences, University of Montana, Missoula, MT, USA

**Metamorphic Phase Diagrams and Geochronology:
You Can't Have One Without the Other**
and

**When the Continental Crust Gets Really Hot:
The Petrology of Ultrahigh-Temperature Metamorphism**

Matthew J. Kohn

Department of Geosciences, Boise State University, Boise, ID, USA

How to Become a Fossil: A Geochemist's Guide
and

Making the Himalaya: Oozing, Squashing or Sliding?

Hans-Peter Schertl

Institut für Geologie, Mineralogie und Geophysik,
Ruhr Universität Bochum, Bochum, Germany

**A Time Machine for Rocks: Cathodoluminescence Microscopy
of Metamorphic and Magmatic Minerals**
and

**How Do Mountains Form? The Critical Evidence from
Small-Scale Petrological Observation**

If your institution is interested in requesting the visit of an MSA Distinguished Lecturer, e-mail your request to the lecture program administrator, Prof. Steven R. Dunn, Dept. of Geology & Geography, Mount Holyoke College, 50 College S, South Hadley MA 01075-6419, USA; e-mail: sdunn@mtholyoke.edu; tel.: +1 (413) 538-2531; fax: +1 (413) 538-2239. The Distinguished Lecturer Program will run from September 2012 through April 2013. Lecturer requests received by May 4, 2012, will be given priority. Late applications will be considered on a space-available basis. In making your request please include (1) the distance and travel time from the airport to your institution, (2) the name of a contact person at your institution for the months of May and June (when lecturer schedules will be assembled), (3) contact e-mail addresses and phone numbers, (4) your flexibility on the chosen lecturer, and (5), for schools outside the U.S., the starting and ending dates of academic terms. Because of travel and schedule constraints, it is normally not possible to satisfy requests for tightly constrained dates such as seminar days.

NOMINATIONS FOR 2013 AWARDS

Remember the 1 June 2012 deadlines for 2013 MSA awards and honors: **Roebbling Medal**, **Dana Medal**, **Mineralogical Society of America Award**, **Distinguished Public Service Medal**, and **Fellowship**.

Submission requirements and procedures:
<http://www.minsocam.org>

Mineralogical Society of America and Geochemical Society SHORT COURSE ANNOUNCEMENTS

Applied Mineralogy of Cement and Concrete

21–22 June 2012 (after ICDC 2012)
Trondheim, Norway

CONVENORS:

Maarten A. T. M. Broekmans,
Geological Survey of Norway

Herbert Poellmann,
Martin Luther Universität



The course will be held in conjunction with the 1st International Congress on Durability of Concrete (ICDC), Trondheim, Norway, June 18–21, 2012. The course will cover the mineralogical and geochemical aspects of clinker and cement production, cement hydration, and concrete damage. Selected topics represent both “hot issues” (reduction of CO₂ emissions, alternative cements) as well as “long-standing problems” (rebar corrosion and “deleterious alkali–silica reaction”, first described in 1940).

Information and registration: www.minsocam.org/MSA/SC/#concrete

Environmental Arsenic Mineralogy, Geochemistry and Microbiology

5 August 2012 (preceding 34th IGC),
Brisbane, Australia

CONVENORS: **Rob Bowell**, SRK Consulting, **Dave Polya**, University of Manchester, **Dave Crow**, University of Otago, **Jack Ng**, University of Queensland, **Petr Drahota**, Charles University

The short course will provide a comprehensive understanding of arsenic geochemistry in the near-surface environment. It will follow on from recent arsenic conferences, such as the Aquatrain series, the most recent being in July 2010 in Manchester, and the EPA conference on arsenic in Denver in 2001. The short course will cover the mineralogy and geochemistry of arsenic and their implications in assessing arsenic geochemistry in natural groundwaters, mine-associated impacts, the interaction of arsenic with biological cycles and its consequences, and the management and mitigation of arsenic related impacts in the environment.

Information and registration:
www.minsocam.org/MSA/SC/#arsenic

THE MINERALOGICAL SOCIETY OF AMERICA

2013 Grants for

Research in Crystallography

from the Edward H. Kraus Crystallographic Research Fund
with contributions from MSA membership and friends

Student Research in Mineralogy and Petrology

from an endowment created by MSA members



Selection is based on the qualifications of the applicant, the quality, innovativeness, and scientific significance of the research as judged from a written proposal, and the likelihood of success of the project. There are three US\$5000 grants with no restrictions on how the funds may be spent, as long as they are used in support of research. Application instructions and online submission are available on the MSA website, www.minsocam.org. Completed applications must be submitted by June 1, 2012.