

Elements

An International Magazine of Mineralogy, Geochemistry, and Petrology



Volume 19, Number 2 • April 2023

Giraffe in front of an outcrop at Olduvai Gorge, Tanzania. Exposed strata include Pleistocene basalts, tuffs, and Olduvai Beds I, II, and III sediments. PHOTO: L. MCHENRY.

Elements is published jointly by the Mineralogical Society of America, Mineralogical Society of the UK and Ireland, Mineralogical Association of Canada, Geochemical Society, The Clay Minerals Society, European Association of Geochemistry, International Association of Geochemistry, Société Française de Minéralogie et de Cristallographie, Association of Applied Geochemists, Deutsche Mineralogische Gesellschaft, Società Italiana di Mineralogia e Petrologia, International Association of Geoanalysts, Polskie Towarzystwo Mineralogiczne (Mineralogical Society of Poland), Sociedad Española de Mineralogía, Swiss Geological Society, Meteoritical Society, Japan Association of Mineralogical Sciences, and International Association on the Genesis of Ore Deposits. The magazine is provided as a benefit to members of these societies.

Elements is published six times a year. Individuals are encouraged to join any one of the participating societies to receive *Elements*. Institutional subscribers to any of the following journals—*American Mineralogist* and *The Canadian Mineralogist*—also receive one copy of *Elements* as part of their subscription. Institutional subscriptions are available for US\$185 (US\$200 non-US addresses) per year in 2023. Contact the executive editor (editorialteam.elements@gmail.com) for information.

Copyright 2023 by the Mineralogical Society of America.

All rights reserved. Reproduction in any form, including translation to other languages, or by any means—graphic, electronic, or mechanical, including photocopying or information storage and retrieval systems—without written permission from the copyright holder is strictly prohibited.

Publications mail agreement no. 40037944

Printed in USA

ISSN 1811-5209 (print)

ISSN 1811-5217 (online)

elementsmagazine.org

pubs.geoscienceworld.org/elements

 **GeoScienceWorld**
Participating Publisher



Into the Rift: The Geology of Human Origins in Eastern Africa

Guest Editors: **Anatoly N. Zaitsev, Charles Musiba, and Lindsay J. McHenry**



75

The Dawn of Humanity: What Can Paleoanthropologists and Geoscientists Learn from One Another?

Charles Musiba, Agness Gidna, and Mulugeta Alene



82

Tectonic and Paleoclimatic Setting for Hominin Evolution in Eastern Africa

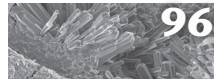
Lydia Olaka and Cynthia J. Ebinger



88

Using Radiometric Dating, Magnetostratigraphy, and Tephrostratigraphy to Calibrate Rates of Hominin Evolution in the East African Rift

Alan L. Deino, Luis Gibert, and Céline M. Vidal



96

Paleolakes of Eastern Africa: Zeolites, Clay Minerals, and Climate

Lindsay J. McHenry, Verena Foerster, and Daniel Gebregiorgis



104

Laetoli: The Oldest Known Hominin Footprints in Volcanic Ash

Anatoly N. Zaitsev, Anton R. Chakhmouradian, and Charles Musiba

DEPARTMENTS

Editorial – The Power of the Collective Imagination of <i>Homo sapiens!</i>	71
From the Editors	72
Meet the Authors	73
Society News	
Deutsche Mineralogische Gesellschaft	111
European Association of Geochemistry	112
Geochemical Society	113
Mineralogical Association of Canada	114
Mineralogical Society of the UK and Ireland	116
Association of Applied Geochemists	118
International Association of Geoanalysts	119
Japan Association of Mineralogical Sciences	120
Sociedad Española de Mineralogía	121
Meteoritical Society	122
Swiss Geological Society	123
Mineralogical Society of America	124
International Mineralogical Association	126
CosmoELEMENTS	127
Calendar	Inner Back Cover
Advertisers in this Issue	Inner Back Cover