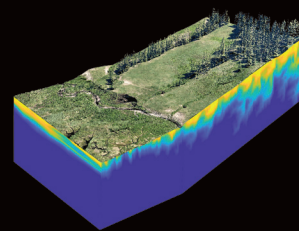


Elements

An International Magazine of Mineralogy, Geochemistry, and Petrology



Elements is published jointly by the Mineralogical Society of America, the Mineralogical Society of Great Britain and Ireland, the Mineralogical Association of Canada, the Geochemical Society, The Clay Minerals Society, the European Association of Geochemistry, the International Association of Geochemistry, the Société Française de Minéralogie et de Cristallographie, the Association of Applied Geochemists, the Deutsche Mineralogische Gesellschaft, the Società Italiana di Mineralogia e Petrologia, the International Association of Geoanalysts, the Polskie Towarzystwo Mineralogiczne (Mineralogical Society of Poland), the Sociedad Española de Mineralogía, the Swiss Society of Mineralogy and Petrology, the Meteoritical Society, the Japan Association of Mineralogical Sciences, and the International Association on the Genesis of Ore Deposits. It is provided as a benefit to members of these societies.

Elements is published six times a year. Individuals are encouraged to join any one of the participating societies to receive *Elements*. Institutional subscribers to any of the following journals—*American Mineralogist*, *Clay Minerals*, *Mineralogical Magazine*, and *The Canadian Mineralogist*—also receive one copy of *Elements* as part of their 2019 subscription. Institutional subscriptions are available for US\$165 (US\$180 non-US addresses) a year in 2019. Contact the executive editor (jross@elements@gmail.com) for information.

Copyright 2019 by the Mineralogical Society of America.

All rights reserved. Reproduction in any form, including translation to other languages, or by any means—graphic, electronic, or mechanical, including photocopying or information storage and retrieval systems—without written permission from the copyright holder is strictly prohibited.

Publications mail agreement no. 40037944

Printed in USA

ISSN 1811-5209 (print)

ISSN 1811-5217 (online)

elementsmagazine.org

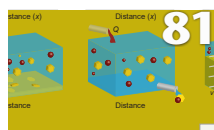
pubs.geoscienceworld.org/elements

GeoScienceWorld
Participating Publisher



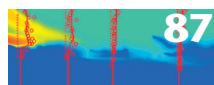
Reactive Transport Modeling

Guest Editors: **Kate Maher** and **K. Ulrich Mayer**



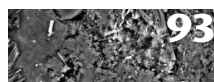
Tracking Diverse Minerals, Hungry Organisms, and Dangerous Contaminants Using Reactive Transport Models

Kate Maher and K. Ulrich Mayer



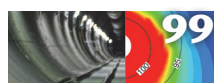
Using Reactive Transport Models to Quantify and Predict Groundwater Quality

Henning Prommer, Jing Sun, and Benjamin D. Kocar



The Role of Reactive Transport Modeling in Geologic Carbon Storage

Anna L. Harrison, Benjamin M. Tutolo, and Donald J. DePaolo



Reactive Transport Modeling: A Key Performance Assessment Tool for the Geologic Disposal of Nuclear Waste

Laurent De Windt and Nicolas F. Spycher



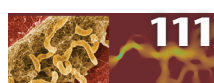
Reactive Transport Models of Weathering

Yves Goddérès, Jacques Schott, and Susan L. Brantley



Reactive Transport of Stable Isotopes

Jennifer L. Druhan and Matthew J. Winnick



Reactive Transport Modeling of Microbial Dynamics

Christof Meile and Timothy D. Scheibe

DEPARTMENTS

Editorial – Does Earth Still Offer Discoveries? **75**

From the Editors **76**

Meet the Authors **78**

Toolkit – The Art of Reactive Transport Model Building **117**

Society News

Sociedad Española de Mineralogía **119**

International Association of Geoanalysts **119**

Mineralogical Society of America **120**

Japan Association of Mineralogical Sciences **122**

European Mineralogical Union **123**

European Association of Geochemistry **124**

Deutsche Mineralogische Gesellschaft **126**

Association of Applied Geochemists **127**

Mineralogical Society of Great Britain and Ireland **128**

The Clay Minerals Society **130**

Mineralogical Association of Canada **131**

Geochemical Society **132**

International Mineralogical Association **133**

Meteoritical Society **134**

Italian Society of Mineralogy and Petrology **136**

International Association of Geochemistry **137**

Book Review – *Encyclopedia of Geochemistry* **137**

Book Review – *Earth's Oldest Rocks* **138**

Calendar **140**

Advertisers in this issue **141**

Parting Shots – Nooks and Crannies –
Mountains and Clouds **143**

