

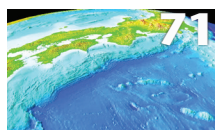
# Elements

An International Magazine of Mineralogy, Geochemistry, and Petrology

Volume 20, Number 2 • April 2024

## Metamorphic Duality in SW Japan— The Sanbagawa-Ryoke Classic Example of Paired Metamorphism

Guest Editors: **Simon R. Wallis**, **Kazuhiro Miyazaki**, and **Ulrich Knittel**



### Paired Metamorphism of SW Japan and Implications for Tectonics of Convergent Margins

Simon R. Wallis, Takamoto Okudaira, and Kazuhiro Miyazaki



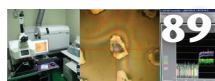
### Sanbagawa Subduction: What Went in, How Deep, and How Hot did it Get?

Shunsuke Endo, Yui Kouketsu, and Mutsuki Aoya



### Ultramafic Rocks from the Sanbagawa Belt: Records of Mantle Wedge Processes

Atsushi Okamoto, Takayoshi Nagaya, Shunsuke Endo, and Tomoyuki Mizukami



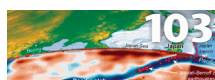
### Geochronology of the Sanbagawa Belt: Younger and Faster than Before

Ulrich Knittel, Tetsuya Tokiwa, Yukiyasu Tsutsumi, Shunsuke Endo, and Simon R. Wallis



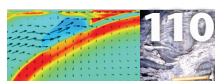
### Inside the Ryoke Magmatic Arc: Crustal Deformation, High-T Metamorphism, and Magmatic Pulses

Takamoto Okudaira, Tetsuo Kawakami, Takeshi Ikeda, and Etienne Skrzypek



### Linking Pacific Plate Motions to Metamorphism and Magmatism in Japan During Cretaceous to Paleogene Times

Jonny Wu, Tsung-Jui Wu, and Ken Yamaoka



### Thermal Modeling of the Sanbagawa and Ryoke Belts

Kazuhiro Miyazaki, Simon R. Wallis, Kazuhiko Ishii, and Catherine Annen

#### DEPARTMENTS

<b>Editorial</b> – Celebrating the Creative Contributions of Japanese Earth Scientists & Engineers . . . . .	<b>67</b>
<b>From the Editors</b> . . . . .	<b>68</b>
<b>Meet the Authors</b> . . . . .	<b>69</b>
<b>Society News</b>	

Japan Association of Mineralogical Sciences . . . . .	118
European Association of Geochemistry . . . . .	120
Geochemical Society . . . . .	122
Società Italiana di Mineralogia e Petrologia . . . . .	124
Mineralogical Society of the UK and Ireland . . . . .	126
Mineralogical Association of Canada . . . . .	128
Deutsche Mineralogische Gesellschaft . . . . .	130
International Association on the Genesis of Ore Deposits . . . . .	132
International Association of Geochemistry . . . . .	133
Mineralogical Society of Poland . . . . .	134
Sociedad Española de Mineralogía . . . . .	135
Meteoritical Society . . . . .	136
Mineralogical Society of America . . . . .	137
Société Française de Minéralogie et de Cristallographie . . . . .	139
Association of Applied Geochemists . . . . .	140
International Mineralogical Association . . . . .	141
The Clay Minerals Society . . . . .	142
<b>Meeting Report</b> . . . . .	<b>143</b>
<b>Calendar</b> . . . . .	<b>144</b>
<b>Advertisers in this Issue</b> . . . . .	<b>144</b>

*Elements* is published jointly by the Mineralogical Society of America, Mineralogical Society of the UK and Ireland, Mineralogical Association of Canada, Geochemical Society, The Clay Minerals Society, European Association of Geochemistry, International Association of Geochemistry, Société Française de Minéralogie et de Cristallographie, Association of Applied Geochemists, Deutsche Mineralogische Gesellschaft, Società Italiana di Mineralogia e Petrologia, International Association of Geanalysts, Polskie Towarzystwo Mineralogiczne (Mineralogical Society of Poland), Sociedad Española de Mineralogía, Swiss Geological Society, Meteoritical Society, Japan Association of Mineralogical Sciences, and International Association on the Genesis of Ore Deposits. The magazine is provided as a benefit to members of these societies.

*Elements* is published six times a year. Individuals are encouraged to join any one of the participating societies to receive *Elements*. Institutional subscribers to either of the following journals—*American Mineralogist* and *Canadian Journal of Mineralogy and Petrology*—also receive one copy of *Elements* as part of their subscription. Institutional subscriptions are available for US\$185 (US\$200 non-US addresses) per year in 2024. Contact the Executive Editor (editor@elementsmagazine.org) for information. Copyright 2024 by the Mineralogical Society of America.

All rights reserved. Reproduction in any form, including translation to other languages, or by any means—graphic, electronic, or mechanical, including photocopying or information storage and retrieval systems—without written permission from the copyright holder is strictly prohibited.

Publications mail agreement no. 40037944

Printed in USA

ISSN 1811-5209 (print)  
ISSN 1811-5217 (online)

[elementsmagazine.org](http://elementsmagazine.org)  
[pubs.geoscienceworld.org/elements](http://pubs.geoscienceworld.org/elements)

**GeoScienceWorld**  
Participating Publisher

